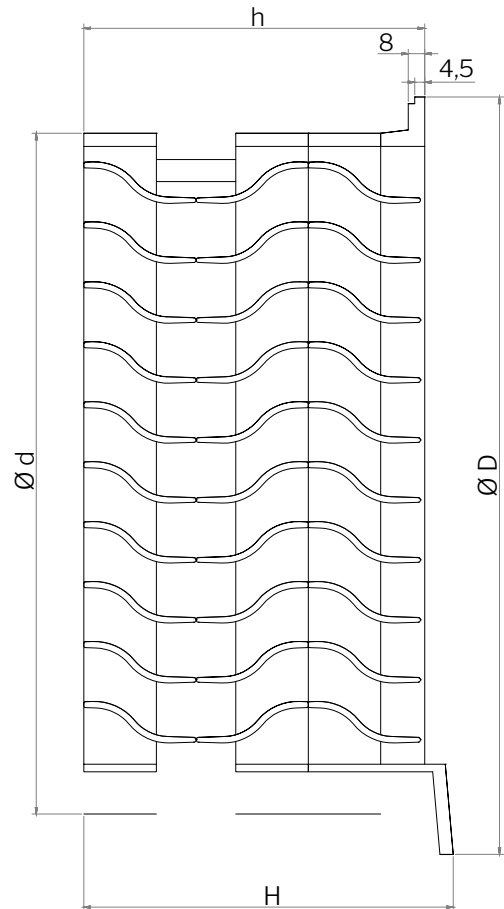
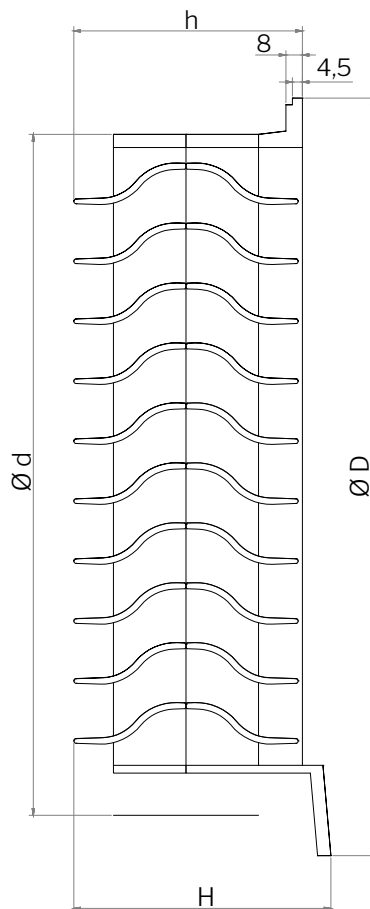
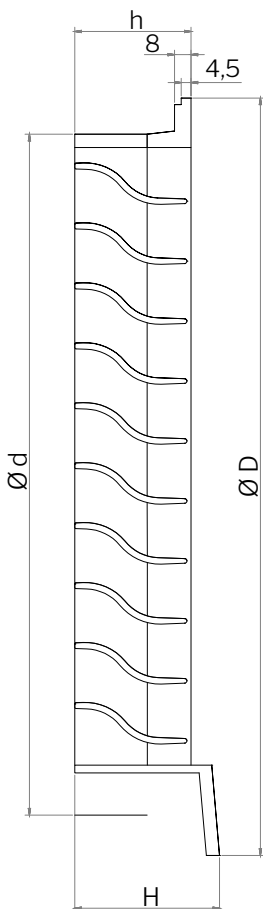
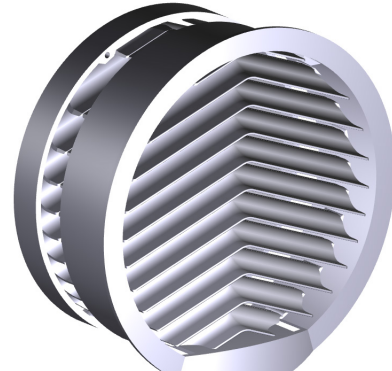
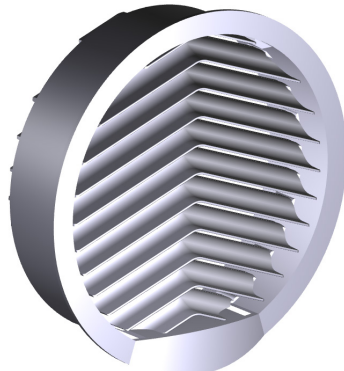


**Data Sheet Airmaster Boomerain®**

Ø315-1

Ø315-2

Ø315-3

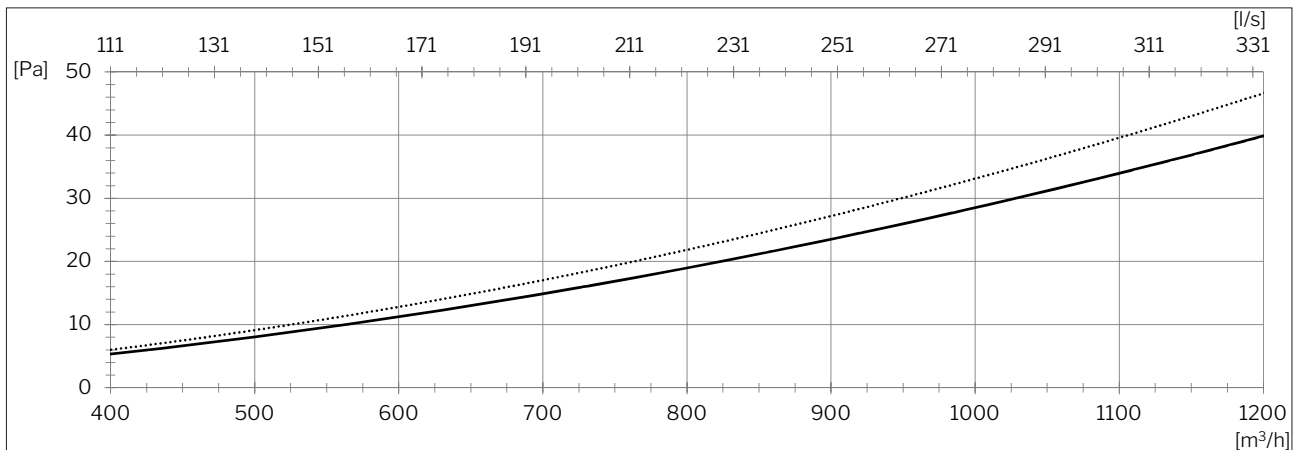


Airmaster Boomerain®		Ø315-1	Ø315-2	Ø315-3
Ø d	mm	312	312	312
Ø D	mm	345	345	345
h	mm	53	104	155
H	mm	66	117	168
Free areal	m <sup>2</sup>	0,0624	0,0624	0,0624
Weight	kg	2,12	3,64	5

All grilles are made from sea water resistant cast aluminium.

### Pressure Drop

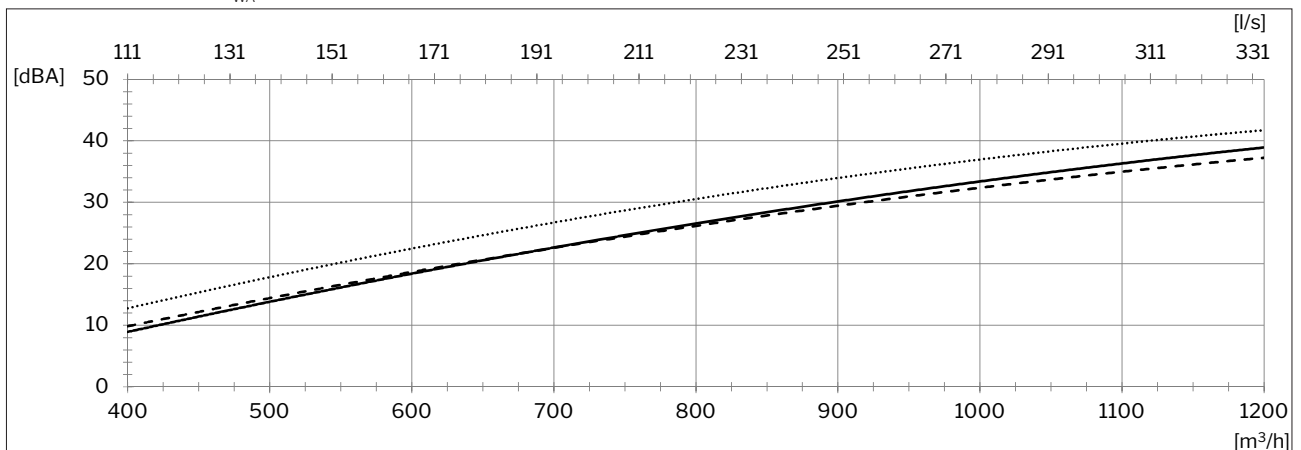
Pressure drop,  $\Delta p$  [Pa], at given airflow,  $q$  [l/s] and [m<sup>3</sup>/h].



- Airmaster Boomerain® Ø315-1 and Airmaster Boomerain® Ø315-2
- - - Airmaster Boomerain® Ø315-2
- ..... Airmaster Boomerain® Ø315-3

### Sound Power Level

Sound power level,  $L_{WA}$  [dBA], due to self-noise at given airflow,  $q$  [l/s] and [m<sup>3</sup>/h].



- Airmaster Boomerain® Ø315-1
- - - Airmaster Boomerain® Ø315-2
- ..... Airmaster Boomerain® Ø315-3

### Sound level in free field (1/4 spherical)

The sound power level,  $L_{WA}$  [dBA], is shown in the diagram.

For calculate (acc. to ISO 9613-2) the sound pressure level,  $L_A$  [dBA], at distance  $x$  [m], see table below.

$$L_A = L_{WA} - K$$

$x$ [m]	1	2	3	4	5	10	20
$K$ [dB]	-5	-12	-15	-17	-19	-25	-30